

Medilux Healthcare Ltd.

Healthcare for the Internet Age

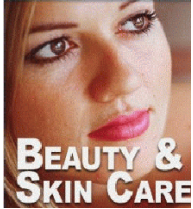
www.mediluxhealth.net

Safe - Natural - Drug-free - Non-invasive

Phototherapy for Personal Health and Beauty

from Q.Products AG (Biotechnology & Photomedicine), Switzerland

Clinical recognition of phototherapy

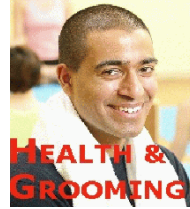


Clinical recognition of the benefits of phototherapy is now widespread. **Biostimulation** by light energises cells directly, enabling them to function and reproduce more efficiently. **Photomodulation** of the blood spreads the benefits more widely throughout the body.

Natural healing is accelerated, the immune system is boosted and pain and inflammation are alleviated.

The benefits of natural sunshine without any ultra-violet mean that **skin looks healthier because it is healthier!**

Modular systems give great flexibility



Carefully balanced, visible and near infra-red light frequencies energise the skin to restore natural cell function, eliminate impurities, boost collagen formation and to **repair damage caused by environment and the ageing process.**

Q.Light® PRO and Q.Light® Skin Care are modular systems, with a choice of medical, cosmetic and colour filter modules. These provide for a wide range of **professional and home treatments** and are clearly labelled to guide the user.



Cosmetic filter modules

- Skin Care** Cool white light for daily skin care, increasing take-up of moisturisers.
- Cellulite Care** Warm orange light treats cellulite and weak connective tissue.
- Anti-ageing Care** Warm white light reduces fine lines and wrinkles, stimulates tired skin.



Medical filter modules

- Acne Care** Cool blue light treats acne and inflammation and regulates talc production
- Pain Care** Warm red light treats pain and inflammation, inc. strains and injuries, post-operative, back pain, rheumatism/arthritis, epilation and cosmetic procedures
- Wound Care without infra-red** Cool white light stimulates healing of injuries, burns and surgical wounds, also leg ulcers, decubitus/pressure sores and diabetic gangrene.
- Wound Care with infra-red** Warm white light for added stimulation of blood circulation and enhanced healing, for muscle strains and uninfected injury wounds.
- Psoriasis Care** Cool white light eases psoriasis/dermatitis and itchy, dry skin conditions.
- S.A.D. Care** Cool white light treats Seasonal Affective Disorder and depressions.



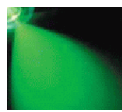
Q.Light® Total Treatment Concept

 Separate brochure available

Explore a world of the senses with colour filter modules, colour-matched aromas, skin conditioners, cleansers and cosmetics. **See the colour, smell the fragrance, feel the care!**



Amploupe Concentrates



Skin Care Products



Colour Aroma Oils

Q.Light® PRO for professional clinics



- 10-40cm light diameter
- Variable aperture
- Timer control
- Electronic display panel
- Fits Regular stand (shown below, right).

Q.Light® Skin Care for portability



- 25cm light diameter
- Fixed aperture
- On/off control
- Fits Regular stand or folding 'Home' stand (shown below left).



Home

Further details

Q.Lights® are not tanning devices and do not emit ultra-violet light. They are CE marked medical products, for stand-alone therapy or to supplement existing treatment regimes.

For more details visit: www.mediluxhealth.net Enquiries: office@mediluxhealth.net

NOTE: Medilux Healthcare Ltd. offers products on the basis of the Manufacturers' representations as to quality and efficacy. Any further guidance as to conditions which may benefit from their use is based purely on our own opinions and beliefs regarding general application. We do not guarantee that goods will be suitable or effective for all purchasers and we do not advise on individual cases. We recommend that customers seek qualified medical advice before commencing treatment.



Safe, natural, drug-free and non-intrusive

Phototherapy for Cosmetic Professionals

from Q.Products AG (Biotechnology & Photomedicine), Switzerland



What are Q.Lights®?

Q.Lights® are non-laser phototherapy devices that offer many of the benefits of low-power laser, in a more convenient, accessible and economic form. Q.Lights® do not emit ultra-violet light, just visible and near infra-red light frequencies up to 1700nm, or selected parts of this spectrum.

Experienced professionals will enjoy the advanced control features of the top model Q.Light® PRO but, unlike laser, you can safely operate any Q.Light® without training, save on annual statutory licence fees and there is no need to wear protective goggles. Practitioners untrained in laser can still achieve outstanding results with Q.Light®, in a safe, simple and affordable manner.

How does Q.Light® work?

Q.Lights® work by biostimulation – energising cells to assist natural regenerative processes, stimulating the immune system, improving perfusion and revascularization and increasing lymphatic drainage. Because Q.Light® also acts on blood cells (photomodulation) through fine capillaries close to the skin surface, biopositive effects are also transmitted throughout the body.

Microcirculation is improved, increasing oxygen supply and helping cells to repair damage caused by injuries, environment and the ageing process and to eliminate waste products more efficiently.

By restoring natural balance and metabolism in the skin cells, Q.Light® therapy is an effective treatment for psoriasis, dermatitis and dry skin conditions generally and take-up of moisturisers is enhanced. With Q.Light® therapy there is no illusion - the skin looks healthier because it is healthier!

How does it feel to receive Q.Light® therapy?

There is no immediate sensation from cool light treatments and just a gentle warmth from those including infra-red. Afterwards there may be a pleasant sensation of having been out in the wind and the skin is more receptive to moisturisers.

Is it safe to look into the light?

Q.Light® represents no danger for the eyes, though it is not necessary and is uncomfortable to look into the light directly. In case of age damage to the eyes or strong sensitivity to light, you should consult a specialist.

Can Q.Light® therapy have any side effects?

Yes – but these are a bonus! Q.Light® phototherapy works by stimulating the body's natural restorative mechanisms so it also treats pain and inflammation from arthritis or rheumatism, leg ulcers, pressure sores and a wide variety of wounds (including operations), burns and injuries. The beneficial results are spread throughout the body by normal blood circulation, so applying Q.Light® therapy to one area (e.g. the face, during a cosmetic treatment) may also provide indirect benefits in apparently unrelated areas.

Is it safe to use on anybody?

No adverse side-effects have been reported, but the manufacturers do not recommend Q.Light® therapy in cases of pregnancy, cancer, over sensitivity to light, intake of photo toxic medication, heart surgery.

Where does Q.Light® fit into a professional beauty programme?

Q.Light® beauty therapy requires light to be absorbed through the skin, so it is applied after thorough cleansing and before other treatments. For most skin conditions Q.Light® Skin Care will treat a 25cm diameter area in 5 minutes. Q.Light® PRO will treat a 40cm diameter area in 4 minutes, or a smaller area in just 2 minutes.

Q.Light® therapy can also be applied before semi-permanent make-up, epilation or other cosmetic treatments in order to reduce subsequent pain. This requires 7-15 mins at 20cm distance or 15-25 mins at 40cm (less with Q.Light® PRO) though other procedures can be carried out at the same time.

After Q.Light® has been applied the skin cells are 'woken up' and function more efficiently. They are better able to absorb moisturisers and to respond to all your usual beauty treatments. Q.Light® thus becomes part of your routine preparation, enhancing customer care and satisfaction.

Will Q.Light® conflict with other treatments?

Q.Light® therapy only works by stimulating the skin and body to perform its normal functions more effectively and to restore these functions to a proper balance, so if your other treatments are safe they will continue to be so. It is possible however that where treatments such as dermal fillers and botox are naturally removed by the body over time, this process may be accelerated slightly because the body is working more efficiently!

Phototherapy for Cosmetic Professionals

What are the Cosmetic filter module sets?

The Cosmetic Home filter module set comprises:

- Skin Care – cool white light for improving skin tone and increased moisturisation.
- Anti-Ageing – warm white light for treating fine lines and wrinkles and enhancing natural elasticity.
- Cellulite – warm orange light for treating cellulite anywhere on the body.

The Cosmetic Professional filter module set adds the following modules from the medical range.

- Pain – warm red light for use before semi-permanent make-up, epilation etc.
- Acne – cool blue light treats all commonly occurring acne conditions

Some of these treatments may be outside your current range and offer new sources of revenue.

So how do I operate a Q.Light®?

Q.Light® PRO:

- i) Slot in the optional filter module for the treatment required, e.g. Pain, then switch on.
- ii) Rotate the mechanical control to set the aperture, as displayed on the control panel.
- iii) Select the time required in minutes, then OK.

Q.Light® Skin Care or Q.Light® Wound Care: Slot in the chosen filter module, then switch on.

All other Q.Lights®: simply switch on!

In all cases apply for the time and at the distance indicated in the Q.Light® treatment guide.

What happens if I over-dose a customer?

Nothing! Most treatments take only a few minutes, during which time the body absorbs the energy it requires. Treatment beyond this point is ineffective but not harmful. You cannot burn or over-dose.

Can Q.Light® light therapy cause cancer?

No! The wavelengths dangerous to humans are under 250 nm (low ultra-violet). The spectrum of the Q.Light® devices is between 385 – 1,700 nm, in the therapeutically effective range.

How else can I earn from Q.Light®?

When applied regularly, preferably for a few minutes every day, Q.Light® **reduces fine lines and wrinkles**, by increasing collagen formation and restoring natural skin elasticity. Whilst customers cannot be expected to visit your salon daily, they could buy their own Q.Light® Skin Care or the simpler Q.Light® Home Care to use at home.

Both offer a 25cm diameter treatment area, enough to include the whole face, and are available on the lightweight, folding 'Home' stand. They are easily

portable, so you could stock a few to sell to customers and/or refer sales to us or to a retailer and earn good commissions.

Q.Light® does not replace the personal care and specialist treatments offered by professional beauticians; it just means better results whether at home or in the salon. Customers can also use their own Q.Light® for a host of family medical complaints ranging from sports injuries to arthritis and dermatitis.

What is the Q.Light® Total Treatment Concept?

For a real 'wow' effect on customers, this brings together coloured light, colour-matched aromatherapy oils, colour-matched ampoule cures to nourish, rebalance, protect and condition the skin and a range of cleansers and cosmetics, all especially designed to work with Q.Light® phototherapy. The Total Treatment Concept requires the purchase of colour filter modules, which are offered in the optional Total Treatment Package, and for a 30 minute treatment you should allow about £10 for replacement of consumables.

Q.Light® gives strong, steady, even-coloured light which is ideal for colour therapy, so you could bring in a colour therapist or encourage some of your staff to train, and offer a wider range of treatments. For experienced colour therapists we also offer five advanced colour modules, making eleven colours in all.

How does Q.Light® enhance my salon's image?

- Modern, natural therapy from Switzerland.
- Satisfies today's demand for non-intrusive and drug-free treatments.
- Skin looks healthier, simply because it **is** healthier!
- Improves moisturisation and lifts all your existing beauty treatments.
- Treats underlying skin conditions such as dermatitis, psoriasis and acne
- Makes painful cosmetic procedures more bearable.
- Non-laser therapy is convenient and economical, covering the whole face in one treatment.

Exclusive Q.Light® Total Treatment Concept takes your customers into a new world of light, colour, fragrance and skin care sensations.

See the colour

Smell the fragrance

Feel the care

Medilux Healthcare Ltd.

Healthcare for the Internet Age

www.mediluxhealth.net
www.mediluxprofessional.net

Safe - Natural - Drug-free - Non-invasive

Q.Light® Treatment Guide

As recommended by Q.Products AG (Biotechnology & Photomedicine), Switzerland



Q.Light® Therapy for ACNE

Scientific studies and empirical reports show individual cases of acne can be significantly reduced or even completely healed by regular therapy with **Q.Light®**. As individual treatment sessions are very short Q.Light® therapy can easily be integrated into traditional - local or systemic - regimens of acne therapy.

The average dose is 9.6 J/cm², applied once per day. For optimal results it is recommended to clean the area to be treated with a mild cleanser, then direct the **Q.Light®** beam at a right angle to the treatment area. Treatment times per session are:

Models	Time	Treatment distance
Q.Light® PRO with Acne Care Filter Module	15 min	40cm
	10 min	30cm
	7 min	20cm
Q.Light® Skin Care with Acne Care Filter Module or Q.Light® Acne Care or Q.Light® Home Care	20 min	40cm
	15 min	30cm
	10 min	20cm

Q.Light® Therapy for PAIN

Q.Light® can be an ideal complementary treatment to a variety of pain management programmes and its beneficial influence can affect the patient's general condition as well as pain symptoms. The average dose applied to the region of pain is around 12J/cm² to 24J/cm².

For optimal results **Q.Light®** therapy should be applied daily, twice per day, but in acute stages sometimes three to four times per day. The light beam is directed at a right angle to the area to be treated and in cases of joint treatment it is possible to extend the therapy without danger. No side effects or contra-indications have been reported.

Models	Time	Treatment distance
Q.Light PRO® with Pain Care Filter Module	10 - 20 min	40cm
	7 - 15 min	30cm
	5 - 10 min	20cm
Q.Light® Skin Care with Pain Care Filter Module or Q.Light® Pain Care or Q.Light® Home Care	15 - 25 min	40cm
	10 - 20 min	30cm
	7 - 15 min	20cm

Q.Light® Therapy for PSORIASIS, DERMATITIS and dry skin conditions

Q.Light® Therapy can offer relief for people with psoriasis conditions. As individual treatment sessions are short, it can easily be integrated into a standard psoriasis care programme depending on indication. The average dose applied to psoriasis is around 12J/cm² and the beneficial and regenerating effect of the **Q.Light®** Therapy can be used to support various forms of skin treatments.

Special dermatological creams can be applied before or after the light treatment. Any residue of cream should be wiped away if applied before commencing the light treatment. **Q.Light®** therapy offers relief of itching within days. The condition normally improves within the first two weeks, however in some cases it is very difficult to achieve total regeneration of the skin. It is recommended to continue long term **Q.Light®** therapy after initial symptom response, to regulate the immune system and moderate future flare-ups.

Q.Light® therapy is applied for just a few minutes once or twice per day. In order to use the Q.Light® system effectively, the skin should be cleansed before exposure to the light. Side effects and contraindications have not been reported. It is advisable to check longer lasting skin conditions with a specialist to receive additional professional advice.

Models	Time	Treatment distance
Q.Light® PRO with Psoriasis Care Filter Module	4 min	40cm
	3 min	30cm
	2 min	20cm
Q.Light® Skin Care with Psoriasis Care Filter Module or Q.Light® Psoriasis Care or Q.Light® Home Care	5 min	40cm
	4 min	30cm
	3 min	20cm

Q.Light® Treatment Guide

Q.Light® Therapy for WOUNDS and BURNS

Typically, wound healing takes place in three interlinking phases: endogenous purification, granulation and epithelialisation. **IMPORTANT NOTE:** In the initial treatment phase of chronic wounds some patients' wounds may respond to light treatment with rapid closure at the edge of the wound site. In these cases light therapy should be discontinued for a few days for the system to adjust and allow healing to proceed evenly. Recommence light therapy after this short period according to the treatment indications below.

For optimal results **Q.Light®** therapy should be applied on a daily basis, with the light beam directed at a right angle to the area under treatment. The average dose applied to wounds is 12J/cm².

Models	Time	Treatment distance
Q.Light® PRO with either Wound Care Filter Module	4 min	40cm
	3 min	30cm
	2 min	20cm
Q.Light® Skin Care with either Wound Care Filter Module or Q.Light® Wound Care or Q.Light® Home Care	5 min	40cm
	4 min	30cm
	3 min	20cm

INFRA-RED

Infra red-light produces a warming effect that stimulates blood circulation and can promote healing. It is not recommended to apply infra-red to infected wounds or to burns however, so there are two Wound Care filter modules to choose from, with and without infra-red. **Q.Light® Wound Care** is supplied with both filter modules, making this model exceptionally good value.

BURN WOUNDS

Q.Light® therapy can reduce the need for surgery in the treatment of deep dermal burns, if applied immediately after admission to hospital. Within this group of patients, the use of light therapy accelerates wound healing and allows for early pressure therapy, therefore reducing hypertrophic scarring and contractures. In addition shortened hospitalisation results in cost benefits and increased patient satisfaction. This form of light therapy has become first choice for deep dermal burns in many hospitals and specialist burn centres.

Q.Light® Therapy for SEASONAL AFFECTIVE DISORDER

For optimal results with **Q.Light® S.A.D.** therapy, it is important to apply an effective dose for adequate biological response. The light beam is directed from the front, directly onto the face and the treatment should be applied on a daily basis. It is not necessary to look directly into the light beam! One can read a book or magazine whilst receiving the light therapy.

Some studies have reported positive responses in patients with non-seasonal depression, premenstrual syndrome (late luteal dysphoria), bulimia, and alcohol withdrawal symptoms. Beneficial results have also been obtained by using the known capacity of light administration and light restriction to shift circadian rhythms.

Models	Time	Lux	Treatment distance
Q.Light® PRO with S.A.D. Care Filter Module	60 – 120 min	2,500	80cm
	40 - 60 min	10,000	40cm
Q.Light® Skin Care with S.A.D. Care Filter Module or Q.Light® S.A.D. Care	60 – 120 min	2,500	60cm
	40 - 60 min	10,000	30cm

Q.Light® Therapy for BEAUTY

For optimal results **Q.Light®** therapy should be applied on a daily basis, especially if treating fine lines and wrinkles. As individual treatment sessions are short, they can easily be integrated into a standard cosmetic programme. The average dose applied for general cosmetic treatments is around 12J/cm². The beneficial and regenerating effect of **Q.Light®** therapy can be used to support normal cosmetic treatments and take-up of moisturisers is increased following light treatment.

Q.Light® therapy is applied for just a few minutes once or twice per day. In order to use the **Q.Light®** system effectively, the skin should be cleansed before exposure to the light.

Models	Time	Treatment distance
Q.Light® PRO with Filter Modules Skin Care, Cellulite Care or Anti-Ageing Care	4 min	40cm
	3 min	30cm
	2 min	20cm
Q.Light® Skin Care with Filter Modules Skin Care, Cellulite Care or Anti-Ageing Care or Q.Light® Home Care	5 min	40cm
	4 min	30cm
	3 min	20cm